



HOW TO APPLY

- 1) Contact your discipline coordinator to discuss your interest in the program
- 2) Visit illinoislend.org to download an application packet
- 3) Submit a completed application packet to your discipline coordinator

For more information, visit illinoislend.org or contact Janine Salameh at jsalam2@uic.edu.

“ *LEND is the single best thing I have immersed myself in. It brings together all disciplines to look at a person holistically. There is no other program I know of that does that. In the realm of disabilities, it makes the impossible, possible.* ”

- Meg Swaback, Self-Advocate

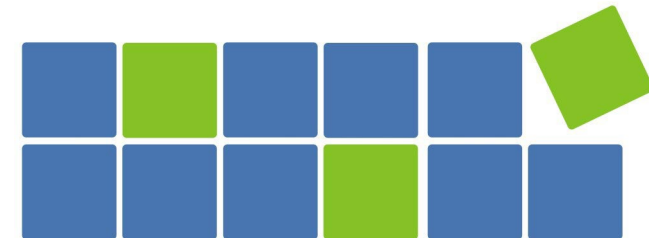
DISCIPLINE COORDINATORS

Applied Behavior Analysis & Therapy	Mark Dixon, PhD: mrdixon@uic.edu
Disability Studies	Sarah Parker Harris, PhD: skparker@uic.edu
Family	Katie Arnold, kkeiling@uic.edu
Nursing	Gina M Juliano, DNP, APRN, CPNP-PC, IBCLC Gjulia2@uic.edu
Nutrition	Eduardo Bustamante, PhD: ebusta2@uic.edu
Occupational Therapy	Ashley Stoffel, OTD, OTR/L: astoffel@uic.edu
Pediatrics	Michael Msall, MD: mmsall@peds.bsd.uchicago.edu
Physical Therapy	Kristine Michelle Chase, PT, DPT, PCS kchase@uic.edu
Psychology	Latha Soorya, PhD latha_soorya@rush.edu
Psychiatry	Diane Misch, MD dmisch@uic.edu
Public Health	Arden Handler, DrPH: handler@uic.edu
Self-Advocacy	Tia Nelis: tnelis@tash.org Jae Jin Pak: jjpak@uic.edu
Social Work	Kristin Berg, MSW, PhD: kberg2@uic.edu
Special Education	Lisa Cushing, PhD: lcushing@uic.edu
Speech-Language Pathology	Anne Hoffman, PhD anne_hoffman@rush.edu

Illinois



Leadership and Education in
Neurodevelopmental
Disabilities



PROJECT TEAM

Kruti Acharya, MD, **Director**
Sarah Sobotka, MD, **Associate Director**
Kristin Berg, PhD, MSW, **Training Director**

**DISABILITY AND
HUMAN
DEVELOPMENT
COLLEGE OF
APPLIED HEALTH
SCIENCES**



The Illinois LEND Program is SEEKING LEADERS

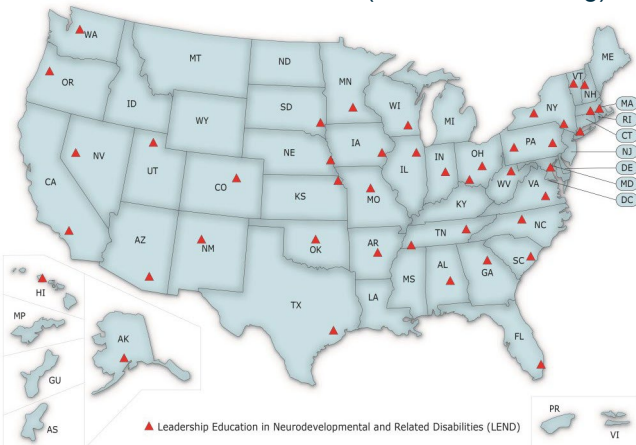
WHAT DOES LEND PROVIDE?

The 1-year (2 semester) interdisciplinary training program incorporates both didactic and experiential learning in clinical and community settings. LEND prepares future leaders who will serve children with disabilities (with a focus on autism) and their families through coordinated, culturally competent, and family-centered care, as well as through public health services and policy systems change.

- Individual tailored mentorship
- Weekly didactic sessions
- Research or leadership projects
- Community outreach
- Policy and advocacy training
- Clinical training with a focus on Autism

NATIONAL NETWORK

There are currently 60 LENDs in 44 states and DC. LENDs form a national network that work together to address national issues of importance to children with disabilities and their families. (See www.aucd.org)



IL LEND provides interdisciplinary leadership training each year in the following 15 disciplines:

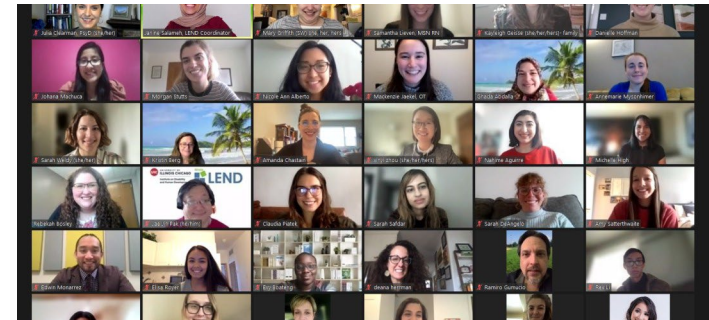
- Applied Behavior Analysis
- Developmental Pediatrics
- Disability Studies
- Family*
- Nursing
- Nutrition
- Occupational Therapy
- Physical Therapy
- Psychology
- Psychiatry
- Public Health
- Self-advocacy**
- Social Work
- Special Education
- Speech-Language Pathology

Family and Self-advocacy trainees provide an invaluable perspective to the IL LEND Program.

**Family trainees have a family member with a disability.*

***Self-advocacy trainees are people with disabilities.*

Priority is given to graduate students in the above disciplines and family/self-advocates; however, recent graduates working in the field may apply.



2021-2022 Illinois LEND Trainees

All trainees complete 300+ hours of leadership and discipline-specific didactic, clinical, and community training. Trainees who are eligible receive a stipend.

“LEND has also helped me to have a greater appreciation for my daughter as she is—disability and all... The LEND experience helps all trainees to see disability in a more positive light and to appreciate the unique and wonderful qualities of individuals with disabilities. At the same time, the LEND program gives its trainees insight into the struggles and needs of this population, needs that non-disabled people often take for granted.”

— Shannon O'Brien

Illinois LEND receives grant funds through the Maternal and Child Health Branch, Health Resources and Services Administration (HRSA), Department of Health and Human Services (DHHS) Grant T73MC11047. The IDHD (UCEDD) is funded by the Administration on Developmental Disabilities.

At UIC, Illinois LEND is housed within the Institute on Disability and Human Development (IDHD). IDHD, a University Center for Excellence in Developmental Disabilities Education, Research, and Service (UCEDD) is dedicated to promoting the independence, productivity and inclusion of people with disabilities into all aspects of society.

Illinois LEND has a partnership between University of Illinois at Chicago (UIC), University of Chicago, RUSH University, Southern Illinois University-Carbondale, University of Illinois Urbana-Champaign, and Advocate Children's Hospital

