

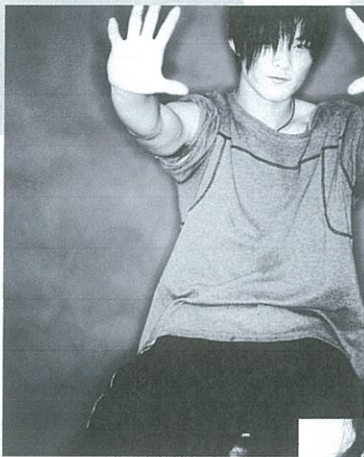
FREE!

ADHD?

Bipolar?

OCD?

**A child you love
has an emotional disorder.
That's why there's NAMI.**



**You will need to register, call:
(618) 798-9788**

Education and Support for Families



**Southwestern
Illinois**

2100 Madison Ave.
Granite City, IL 62040
(618) 798-9788

Call for information about programs for family members of adults as well.



The 6-session course includes:

- Current information about ADHD, Bipolar, Depression, Oppositional Defiant Disorder, Anxiety Disorders, Substance Abuse Disorder and more
- New ways to handle challenging behaviors
- Help with school problems
- Taught by trained parent volunteers who know what it's like to raise a child with mental illness
- There is no charge as the class is funded through the generous support of the Madison County Mental Health Board, St. Clair County Mental Health Board and the Lutheran Foundation of St. Louis

Proud member of

United Way
of Greater St. Louis



What You'll Find At NAMI

- Friends who care and understand
- Ideas to help you take care of yourself and your family
- A chance to share your experience and learn from others
- Help. Hope. Healing.
- "You are not alone."